



RESERVE BANK OF AUSTRALIA

26 July 2017

Address to Anika Foundation Luncheon, Sydney

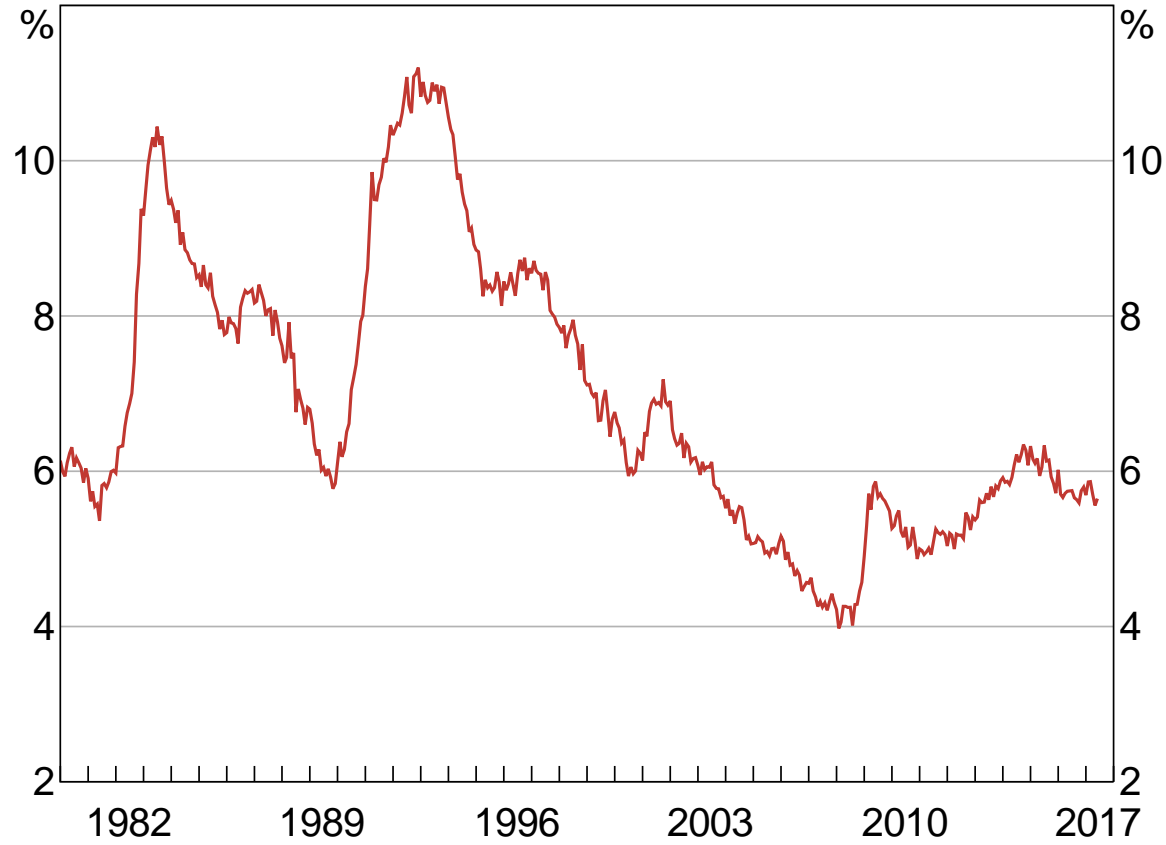
The Labour Market and Monetary Policy

Philip Lowe
Governor

Supported by NAB and ABE

Unemployment Rate

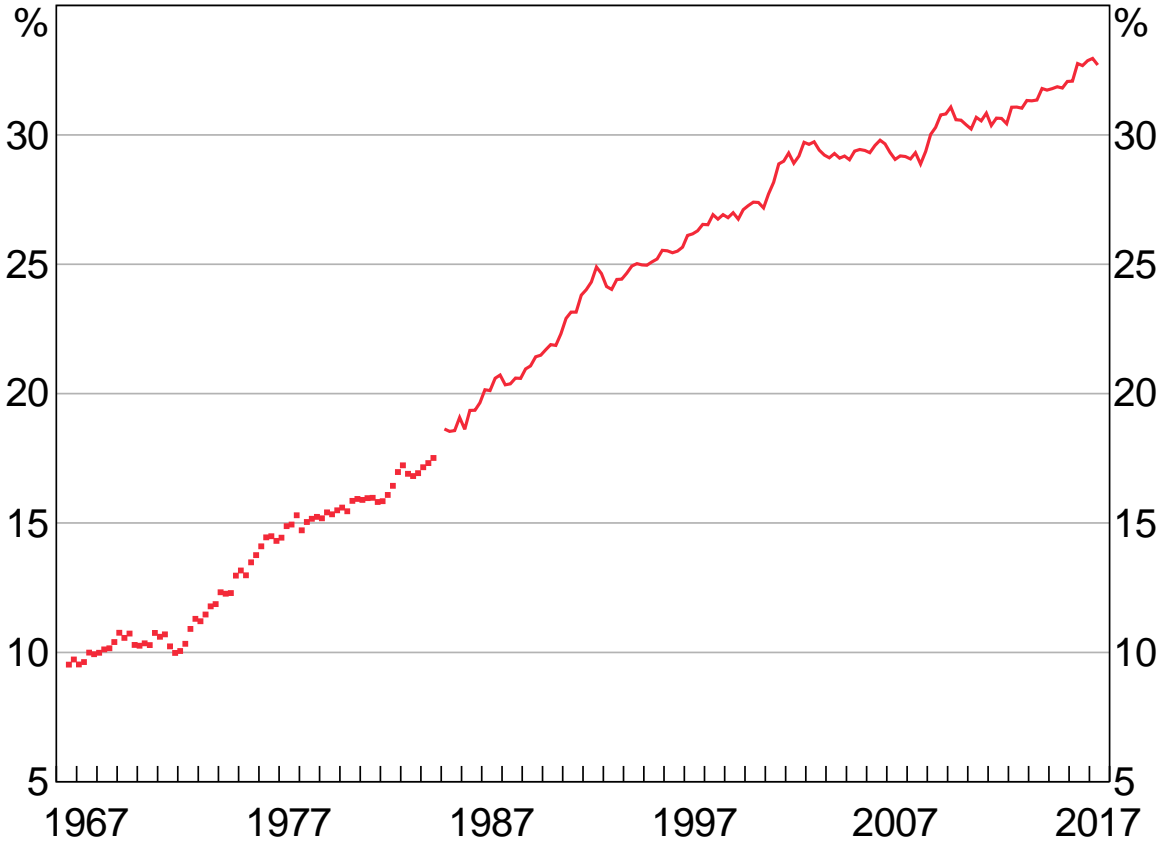
Monthly



Source: ABS

Part-time Share of Employment

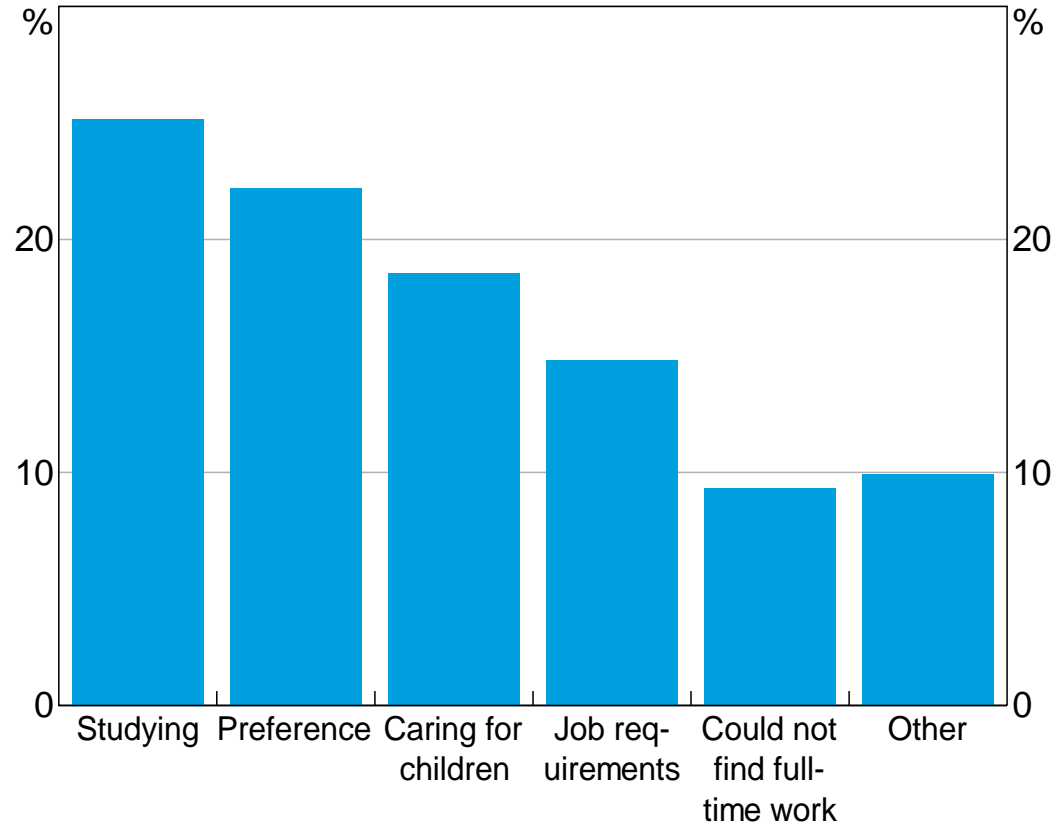
Seasonally adjusted



Sources: ABS; RBA

Reasons Why People Work Part-time

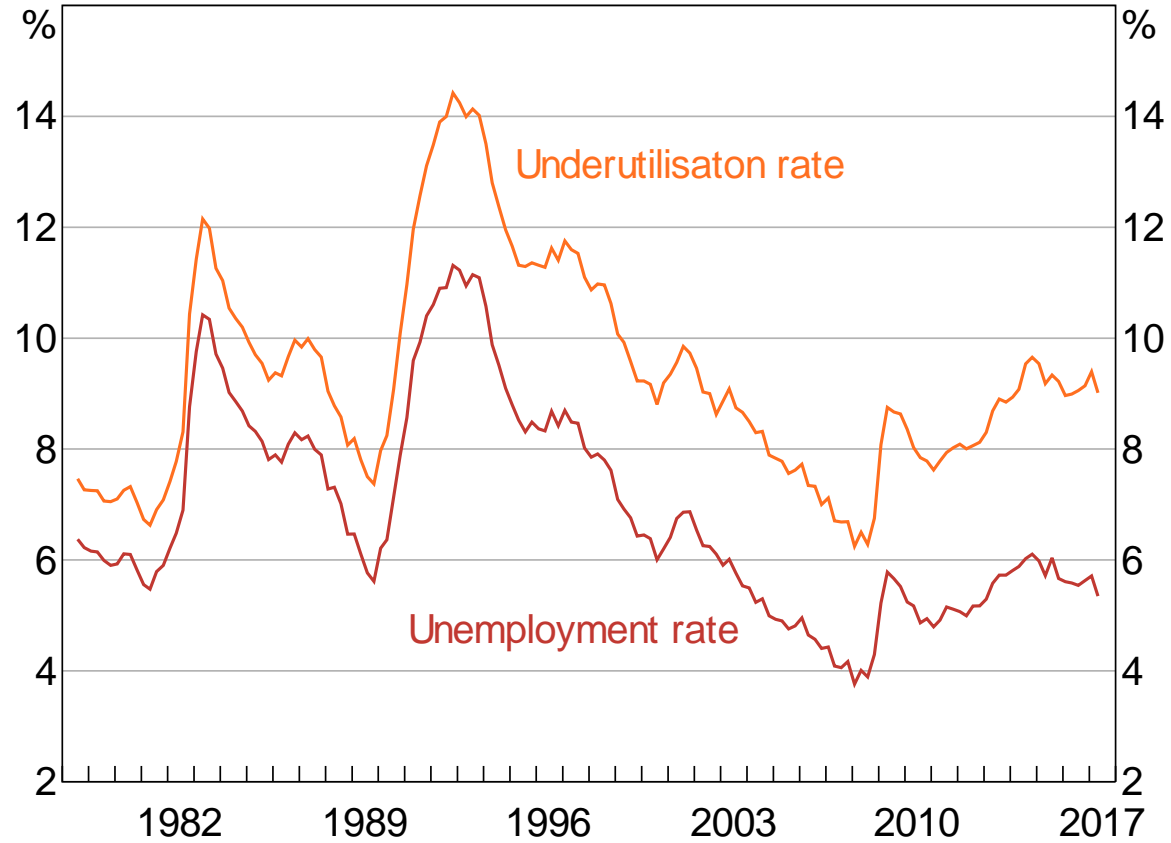
Share of employed respondents, population weighted, 2015 sample



Sources: HILDA Release 15.0; RBA

Labour Market Underutilisation

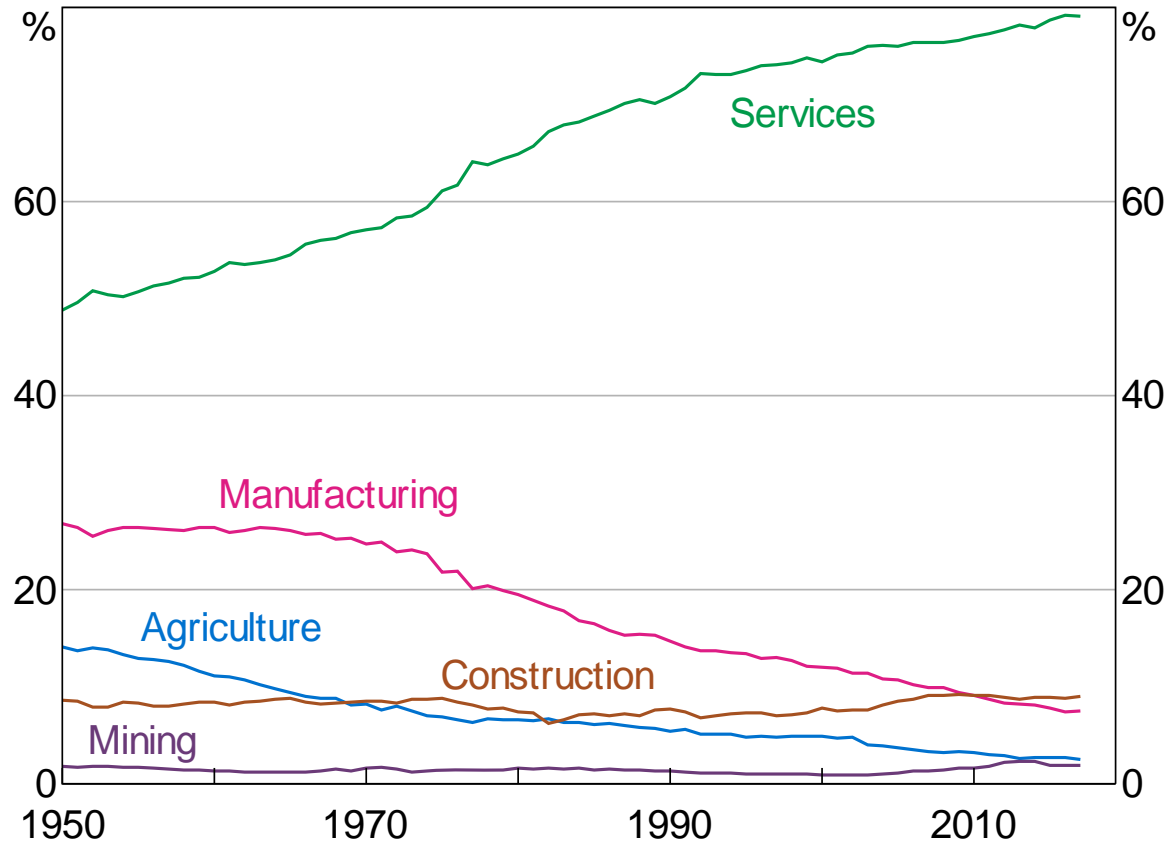
Hours-based measures, quarterly



Sources: ABS; RBA

Employment by Industry

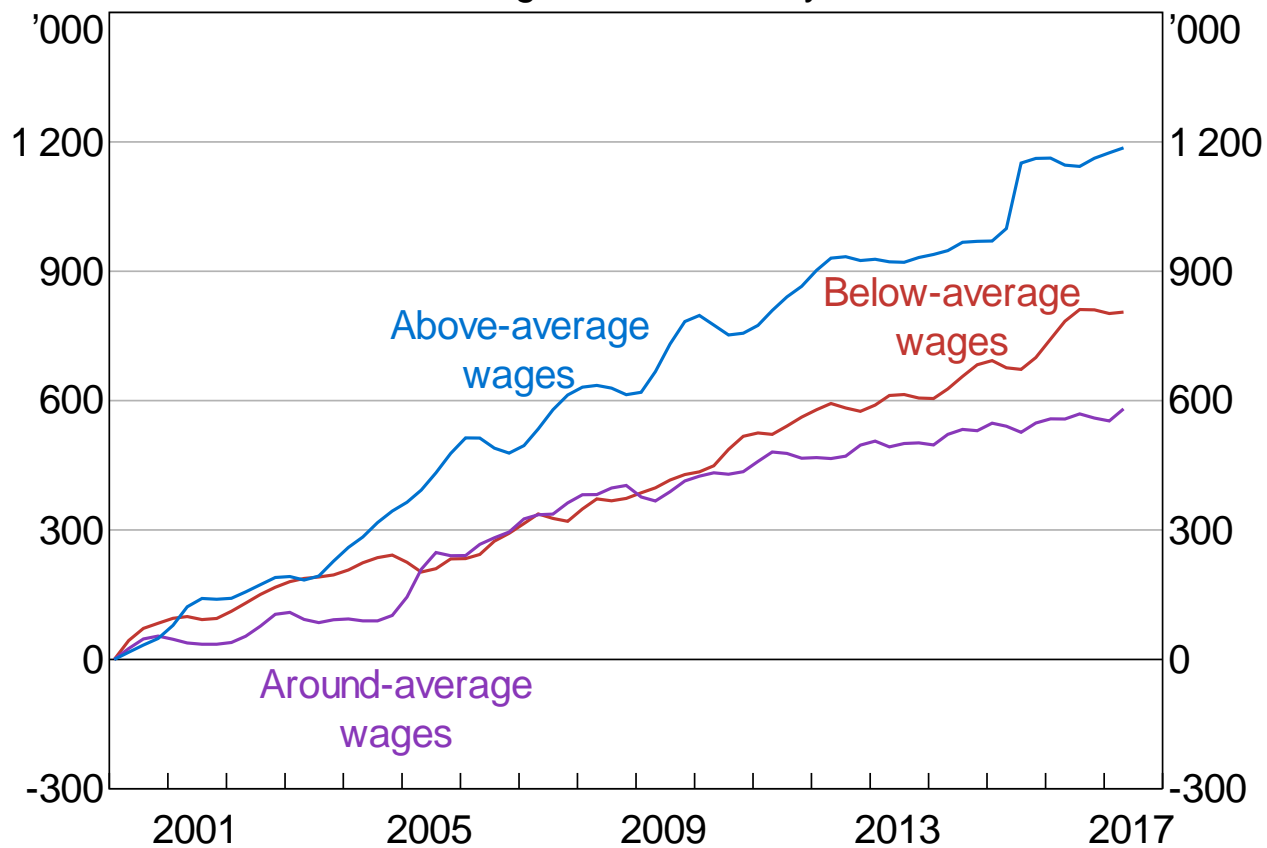
Share of total



Sources: ABS; RBA; Withers, Endres and Perry (1985)

Services Employment

Cumulative change since February 2000, trend



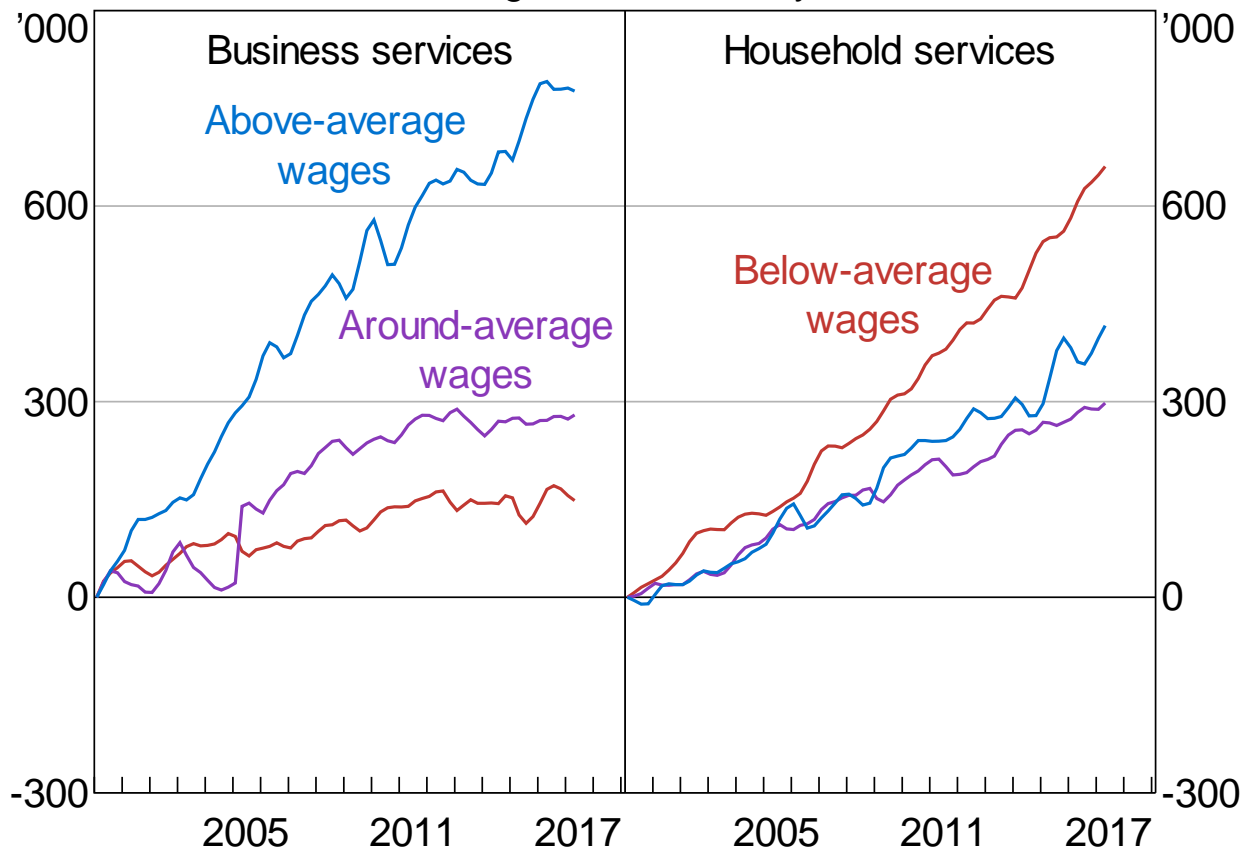
Sources: ABS; RBA



RESERVE BANK
OF AUSTRALIA

Employment by Sector

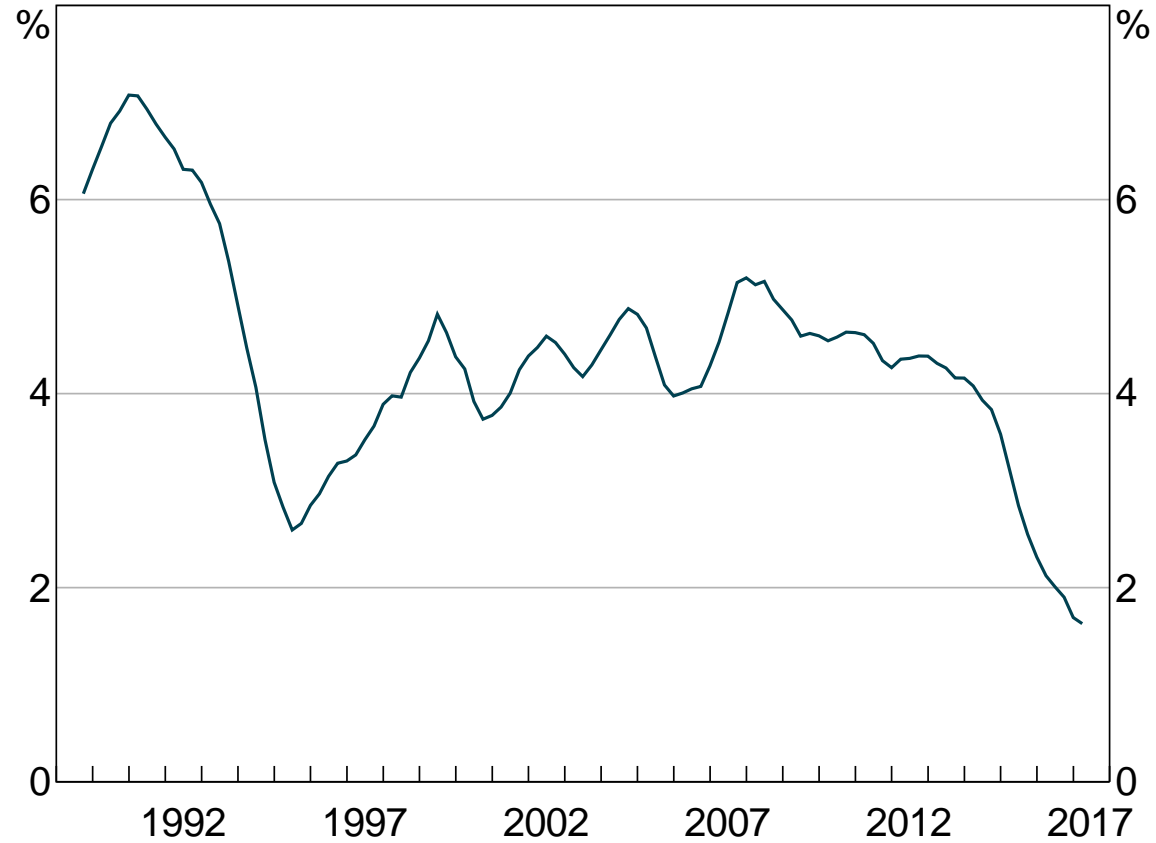
Cumulative change since February 2000, trend



Sources: ABS; RBA

Average Earnings per Hour

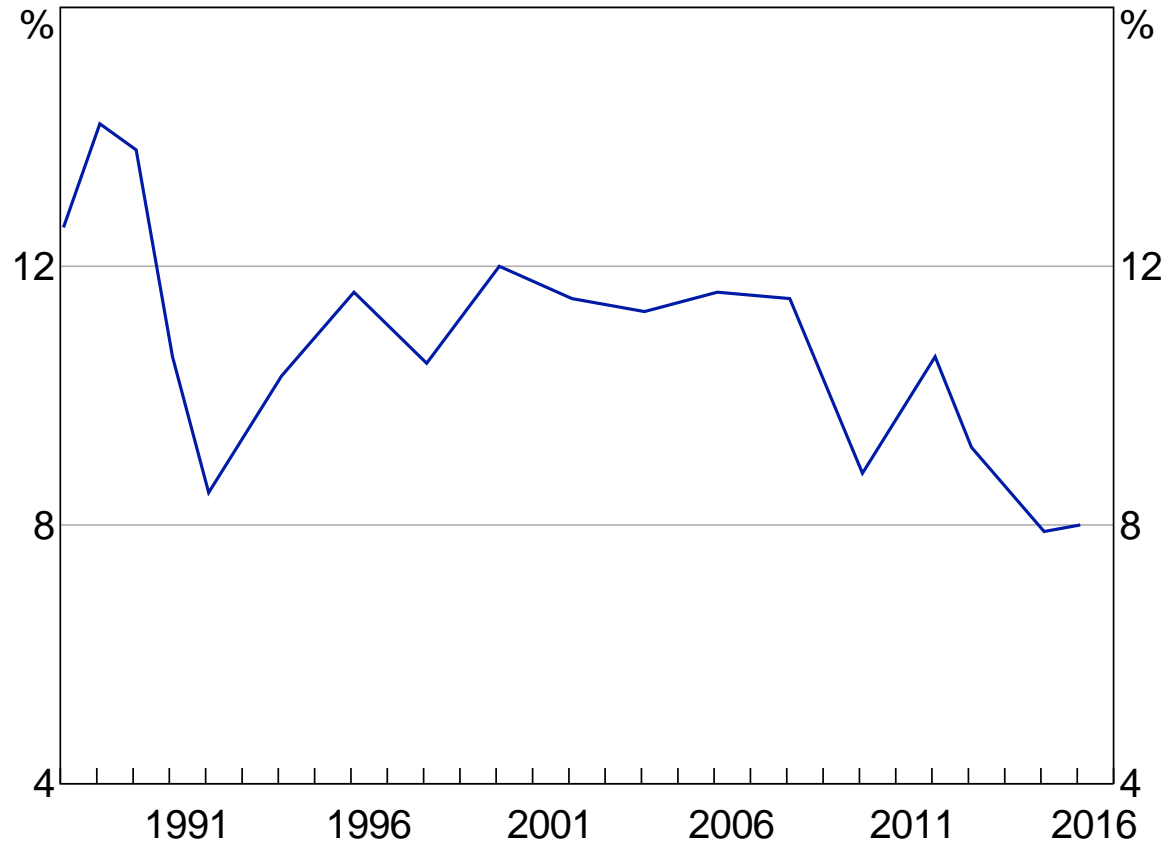
Year-ended growth, four-year moving average



Sources: ABS; RBA

Job Mobility

Share of employed who changed employer in past year



Sources: ABS; RBA



RESERVE BANK OF AUSTRALIA

26 July 2017

Address to Anika Foundation Luncheon, Sydney

The Labour Market and Monetary Policy

Philip Lowe
Governor

Supported by NAB and the ABE